



LLOWALONG
— FARM —

WHERE
CHAMPIONS
ARE *made*



Quality IS OUR PRIORITY

Llowalong Farms is committed to excellence in every aspect of our operation. From premium stallions and proven broodmares to dedicated care and professional service, we're focused on delivering results for breeders who expect the best.



BREEDING EXCELLENCE IN THE HEART OF *Kyabram*

Experience an unmatched level of service. The powerful partnership of Llowalong Farms and Northern Rivers Equine combines world-class stallion care and reproductive expertise with premium veterinary support, delivering a seamless, superior experience for breeders. From conception to foaling, you can trust in a team committed to excellence every step of the way.

World class STALLIONS

POSTER BOY 1.49.1	\$6,600 INCL GST.	Page 06
SOHO TRIBECA 1.53.8	\$3,300 INCL GST.	Page 08
YANKEE ROCKSTAR 1.52.2	\$1,980 INCL GST.	Page 14
KING OF THE NORTH 1.50.3 (FROZEN)	\$6,600 INCL GST.	Page 18
PASTOR STEPHEN TR 1.52.8	\$3,500 INCL GST.	Page 20



HERITAGE, *Heart* & HARNESS CHAMPIONS

With a unique skillset and expert knowledge in the standardbred stud space in Australia as well as a drive and passion to assist in growing the Harness Racing Industry, we as Llowalong Farms, look forward to leading Victoria and indeed Australia, into the breeding arena long into the future.

Nestled in the heart of Victoria's Goulburn Valley, Llowalong Farms in Kyabram is a premier standardbred stud and equine facility, renowned for its world-class stallion roster and comprehensive breeding services. Founded by Dr. Kath McIntosh, Llowalong Farms has rapidly evolved into a leading force in Australian harness racing, offering cutting-edge veterinary care, agistment, foaling, and reproductive services.

The farm boasts a distinguished lineup of sires, including international stars like **King Of The North**, alongside local champions such as **Yankee Rockstar** and **Poster Boy**. With meticulously maintained, irrigated pastures and purpose-built facilities, Llowalong ensures optimal care and preparation for mares, foals, and yearlings. Rooted in family heritage and driven by a passion for excellence, Llowalong Farms is dedicated to shaping the future of harness racing in Australia.

FARM SERVICES	STALLIONS
<ul style="list-style-type: none"> • 24 hour supervised foaling down • Weaning and handling • Yearling preparation • Chilled and frozen AI • Embryo Transfer • Difficult mare breeding • Short term and permanent agistment • Spelling agistment 	<ul style="list-style-type: none"> • King Of The North (FROZEN) • Pastor Stephen • Poster Boy • Soho Tribeca • Yankee Rockstar

Book your mare today and breed with the best at Llowalong Farms.



IN THE FEED ROOM:

How to boost your horse's fertility?

Why should breeders be thinking about targeted supplementation for fertility?

Because a successful breeding season starts from the inside out. Specific nutrients like omega-3s, vitamin E, and CoQ10 are proven to support reproductive health by improving semen quality, fertility rates, foal immunity, and overall reproductive performance. The right supplements can make a noticeable difference, especially in artificial insemination programs or for horses with previous fertility challenges.

What does Nano-E® do for breeding mares and stallions?

Nano-E is a natural-source, fast-acting vitamin E supplement with excellent bioavailability — meaning it gets absorbed quickly and efficiently. In stallions, it helps improve sperm motility, semen quality, and immune function. In mares, it promotes uterine health and supports embryo viability. It's a cut above synthetic vitamin E options, offering reliable reproductive support when it counts.

How can Nano-Q10™ help stallions this season?

Nano-Q10 is a specially formulated CoQ10 supplement that enhances sperm motility and helps support energy production, which is crucial for high-performing breeding stallions. It's also been shown to improve the quality of semen when freezing, making it ideal for artificial insemination programs. Unlike generic CoQ10 products, this one's designed for maximum absorption and reproductive impact.



What makes EO-3® a good choice for breeding horses?

EO-3 is a high-quality omega-3 supplement rich in DHA, which plays an important role in reproductive health. In stallions, it improves sperm quality, motility, and morphology. In mares, it helps reduce inflammation and promotes uterine health — both important for improving conception rates and maintaining healthy pregnancies. It's a premium option that delivers more consistent, reliable results than plant-based omega-3 products.

Why do breeders need to pay attention to antioxidants and omega-3s?

Antioxidants like vitamin E and CoQ10 help neutralise damaging free radicals, protecting sperm cells and reproductive tissues. Long-chain omega-3s, especially DHA, have been shown to enhance semen volume, motility, and morphology — key factors for breeding success. Together, these nutrients give breeding horses the nutritional edge they need to perform at their best.

How should these supplements be introduced into a breeding program?

It's simple — just add them into your horse's daily feed routine leading up to and throughout the breeding season. Each supplement is designed for fast absorption and optimal effectiveness, so your breeding stock will be in top shape when it matters most.

In the feed room this season, make sure EO-3, Nano-E, and Nano-Q10 are part of your conversation. They're research-backed, high-quality supplements proven to support fertility, reproductive health, and successful breeding.

Fuel Fertility. Maximise Breeding Success.



Research-proven products you can trust.

Developed by:



Scan to discover more.

Foaling tips FOR THE SEASON

KNOW THE DUE DATE

Knowing when your mare is due is really important for a whole host of management practices. From there you can work out appropriate times for:

- Worming
- Vaccination eg. Tetanus and Strangles, Equine Herpes, Salmonella boosters
- Nutrition
- Movement plans
- Key times for special procedures such as caslick removal. Caslicks are a small surgical procedure performed on the vulva to minimise contamination into the uterus, decrease the chance of placentitis (and therefore abortion or septic foals) and restore normal conformation to older mares. These must be removed from mares before they foal or else there will be complications.

It is also really helpful to identify when things may not be tracking so well. If you know you mare isn't due until the 10th of October and suddenly in late August or early September she starts to make an udder prematurely or run milk, they are sure signs that something is wrong with the pregnancy.

THE 1, 2, 3 RULE FOR MARES AND FOALS

1. Foals should be on their feet in an hour
2. Foals should be on the suck in two hours
3. The mare should have passed her placenta by 3 hours post foaling.

If the foal is not able to stand unsupported in one hour it is likely that something is wrong – seek veterinary attention.

The foal should be on the suck within two hours. It is really important that the foal gets the colostrum (first milk) from the mare – if the foal does not get adequate colostrum this is called failure of passive transfer. The colostrum provides valuable immunity to the foal and if this does not occur the foal is in danger of getting illness or infection easily. If the mare has been running milk for a couple of days before foaling, it is likely that she will have lost a lot of that valuable colostrum and therefore the foal will not have adequate immune protection.

The foals have a maximum absorption by the gut of the colostrum for the first 12 hours. Then the absorption declines over the next 12 hours before the colostrum is no longer absorbed by the gut at 24 hours. It is therefore important that foals receive the colostrum as soon as possible. The foals can be easily tested once they are 24 hours old to check for adequate passive immunity. This is via a simple blood test. If the foal has failure of passive transfer (inadequate quality or quantity of colostrum) then the foal can be supplemented with plasma to ensure that its immune system can provide some protection from infection.

Sometimes the foal misses out on the colostrum because it is already unwell (septic) or a dummy foal and has no suckle reflex. Often these foals look like they are suckling but in fact are just wandering aimlessly under the mare. Other times a foal misses out because the mare is a maiden mare and does not like the sensation of the foal suckling from her udder and therefore will not stand for the foal to suck. The hormone oxytocin is released when a foal suckles. This aids in milk let down. However, oxytocin also causes contraction of the uterus at the same time. This can be painful to the maiden mares, and they associate the suckling with pain and therefore try to avoid the sensation and don't let the foal suckle.

If a mare fails to pass her placenta within 3 hours then seek veterinary assistance. This is not normal and the longer the placenta stays in the mare at risk the mare is of infections and sepsis. This can make the mare laminitic, colicky and reduce milk production. It can also cause damage to the uterus and long-term infection, therefore reducing the chances of her going in foal again.

Please contact Kentucky Equine Research for a free diet analysis for your horse 1800 772198 or email advice@ker.com.

SOMEBEACHSOMEWHERE | ASTON VILLA | ARTSPLACE

POSTER BOY

1.49.1
\$803,310

Bred for greatness

**BEST \$ VALUE SON OF
SOMEBEACHSOMEWHERE
IN AUSTRALIA**

Total of 40 winners from 70 starters - total prize money of \$1.2m. Phenomenal start to Stallion career. His quickest in 1:51.2 is **Its Confidential** (from the **Well Said** mare **Speak No Evil**). **Poster Boy** is crossing well with **Rocknroll Hanover** mares as well as **Art Major**, **Western Terror**, **Bettors Delight**, **Bettorthanneddar**, **Well Said** and **Sportswriter** mares.

LEADING FIRST SEASON SIRE 2YO COLT OF THE YEAR[^]

[^]The Highlight Reel



**THE FASTEST SON OF
SOMEBEACHSOMEWHERE
TO WIN IN THE SOUTHERN
HEMISPHERE**

Poster Boy is an exceptional son of the legendary, breed-shaping stallion **Somebeachsomewhere**, out of an award-winning broodmare by the world's leading broodmare sire, **Artsplace**. With an impressive race record of 30 starts for 22 wins, few stallions can match his strike rate. While his remarkable sire boasts an almost perfect record of 20 wins from 21 starts, **Poster Boy** stands in elite company with achievements that place him firmly among the best.



30 STARTS FOR 22 WINS INCLUDING 5 GROUP ONE WINS



LLOWALONG
FARMS



LAURISTON
BLOODSTOCK

SERVICE FEE \$6,600 INCL. GST

FOR BOOKINGS OR FOR FURTHER INFORMATION

(03) 5852 2845 / Dr Kath McIntosh 0427 497 429

lloalongfarms@nrequine.com.au

THE MILLIONAIRE SON OF AMERICAN IDEAL

Soho Tribeca has had a total of 38 winners from 53 starters - total of \$800k in prizemoney. His quickest so far has been **Golden Tribe** in 1:54.0 (from the **Courage Under Fire** mare – **Golden Valour**. **Soho Tribeca** has had 5 horses with more than 5 wins each win in under 1:55.

Soho Tribeca is crossing particularly well with **Somebeachsomewhere** mares and also **Bettors Delight**, **Art Major** and **Courage Under Fire** mares.

1:53.8 \$1,103,854

Soho Tribeca

AMERICAN IDEAL | PIXEL PERFECT | AMARILLEN

**PROVEN PEDIGREE.
UNMATCHED GRIT.**

www.sohotribeca.com.au

WINNER OF 3 GROUP ONE'S

Soho Tribeca is unquestionably one of the best racehorses to grace Australian tracks in modern times. A powerhouse on the track and now a standout at stud, he is the exceptional son of Australia's most prolific Broodmare of this century. His dam has produced 8 foals of racing age including one in 1.49.5 and five in less than 1:55, total progeny earnings of over \$2.44 million.

Soho Tribeca's own career was nothing short of remarkable, with victories over some of the greatest names of the era, including **Lazarus** (twice), **Tiger Tara**, **Lennytheshark**, and **Chicago Bull**.

A rare mix of pedigree, performance, and presence. **Soho Tribeca offers breeders a true champion's legacy.**

4YO
RETRAVISION
GOLDEN
NUGGET

VICBRED
4YO
ENTIRES AND
GELDINGS

WESTERN
AUSTRALIAN
PACING CUP

A CHAMPION BY BLOOD AND PERFORMANCE

He turned heads in the Miracle Mile, sitting parked the entire trip and finishing a breathtaking second- beaten only a half neck - in a **Southern Hemisphere record of 1:46.9**. His toughness and speed were on full display again when he smashed the Kilmore Pacing Cup race record by over 2 seconds, rating 1:56.0 for 2690m while parked throughout. And who could forget his devastating 11.2m defeat of **Lazarus** in the Inter Dominion heats, rating 1:54.2 with a scorching last half in 54.5? **Soho Tribeca is the complete package: world-class pedigree, iron-tough performances, and the kind of brilliance that leaves a lasting mark.**



LLOWALONG
FARMS

SERVICE FEE \$3,300 INCL. GST

FOR BOOKINGS OR FOR FURTHER INFORMATION

(03) 5852 2845 / Dr Kath McIntosh 0427 497 429

llovalongfarms@nrequine.com.au



RANDLAB

DEWORMERS



Randlab supports the responsible use of anthelmintics



EQUIVALENT TO EQUIMAX®



ProMax All Wormer

Broad-spectrum wormer
Abamectin 3.7 mg/g + Praziquantel 46.2 mg/g
Up to 600kg | 32.4g syringe

EQUIVALENT TO STRATEGY-T®



Oxfendate

For strategic rotation away from mectin-based dewormers.
Oxfendazole 7.0 g + Pyrantel Embonate 9.1 g
Up to 700kg | 35mL syringe

EQUIVALENT TO EQUEST® PLUS TAPE



Goldmectin LV

Low volume, broad-spectrum dewormer
Ivermectin 18.7 mg/g + Praziquantel 140 mg/g
Up to 600kg | 7.49g syringe

RESERVE FOR SPECIAL USE



Pradectin with Tape

Reserve for when resistance is identified or strongly suspected
Moxidectin 20 mg/mL + Praziquantel 125 mg/mL
Up to 575kg | 11.8g syringe



LEADERS IN ARTIFICIAL INSEMINATION, EMBRYO TRANSFER & EQUINE HEALTH

NORTHERN RIVERS HAS A TEAM OF QUALIFIED AND EXPERIENCED STAFF TO LOOK AFTER ALL ASPECTS OF YOUR HORSE.

Featuring state of the art facilities that include a total of 700 acres of irrigated pastures, a stable complex to house 18 horses, 8 horse monorail walker, fully equipped lab and purpose built stallion collection barn. Northern Rivers also runs a dedicated herd of recipient mares focussing on temperament and serviceability.



REPRODUCTIVE SERVICES

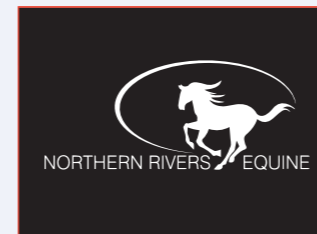
- AI – Fresh, Chilled and Frozen Semen
- Embryo Transfer - run our own herd of recipient mares
- Mare Scanning
- Semen Collection
- Semen Freezing
- Foaling Down



ALSO OFFERING

- Short and Long Term Agistment
- Ultrasound, portable digital X-Ray, portable scope, ECG
- Pre-purchase exams and dentistry
- Lameness and poor performance work-ups
- Equine veterinary medicine and surgery (ambulatory and hospital facilities)
- Pathology - in-house Blood pathology machine
- Rehabilitation
- 8 horse monorail walker

With extensive industry expertise, supported by our cutting-edge facility in Kyabram, Victoria, our team is your trusted partner for all your equine veterinary needs.



CONTACT OUR EXPERIENCED TEAM FOR MORE INFORMATION

Dr Kath McIntosh BVSc (Hons 1st class) CMAVA
(03) 5852 2845 / admin@nrequine.com.au
www.nrequine.com.au



randlab.com

Shipping Globally

CHRISTIAN CULLEN | SAN SOPHIA | ARTSPLACE

RAGING BULL

1.56.6

THE BEST OF TWO HEMISPHERES

NOW STANDING IN COOTAMUNDRA NSW



A TRUE BLUE BLOOD

Raging Bull is a truly rare individual - almost certainly the only stallion to have stood at stud in Australia or New Zealand with such a distinctive blend of elite bloodlines from both hemispheres. His sire, the great **Christian Cullen**, was bred in the Southern Hemisphere and rose to become one of the leading sires in both Australia and New Zealand. On his dam's side, **Raging Bull** carries the powerful influence of **Artsplace**, one of the most revered stallions ever bred, raced, and stood in the Northern Hemisphere. This exceptional cross of world-class genetics makes **Raging Bull** a standout prospect for breeders seeking proven excellence and rare pedigree.



SERVICE FEE \$3,300 INCL. GST

FOR BOOKINGS OR FOR FURTHER INFORMATION

South West Slopes Veterinary Clinic / Cootamundra NSW
Lauren Eggins 0400 871 509 / laureneggins2@outlook.com

ROCKNROLL HANOVER | ASTON VILLA | ARTSPLACE

YANKEE ROCKSTAR

1.52.2
\$329,048

Yankee Rockstar's
unique breeding makes
him a brilliant option
for so many crosses
in Australia.

BY A WORLD CHAMPION... FROM AN
AUSTRALIAN BROODMARE OF THE YEAR

Total of 31 starters for 19 winners totalling almost \$600k in prize money. This RocknRoll Hanover sire is crossing well with Art Major, Somebeachsomewhere, Grinfromeartoe and Modern Art mares. His best horse has been Rock Artist with \$129k in the bank. Yankee Rockstar is a terrific value for money sire.

ELITE PEDIGREE, PROVEN PERFORMANCE, PROMISING FUTURE

Yankee Rockstar is bred for greatness, being the first colt from the Award-winning Artsplace mare Aston Villa - who was sired by the legendary Rocknroll Hanover, a proven sire of sires. This makes him a direct product of the same elite cross as Rock N Roll Heaven and King Of Swing. Yankee Rockstar wasted no time making his mark on the track, winning his first seven starts as a 2 and early 3YO with electrifying finishing quarters in 27 seconds and change. His only early defeat came in a Group Two showdown with Bling It On, where he clocked 1.52.5. Retiring with 22 wins from 35 starts and earnings of \$329,048, he proved himself against champions like Hectorjayjay, Major Crocker, and Ohoka Punter. Though initially retired after serving just a handful of mares, his small first crop has already produced winners like Champagne Rockstar (1.57.8).

His first full commercial crop, now 2YOs, are turning heads - most notably the unbeaten Rock Artist. With size, strength, and exceptional temperaments, Yankee Rockstar's progeny are showing all the hallmarks of stallions destined to leave a lasting legacy.



LLOWALONG
FARMS

SERVICE FEE \$1,980 INCL. GST

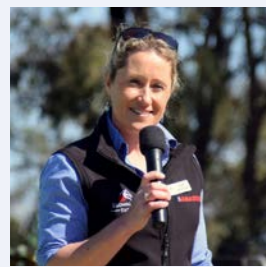
FOR BOOKINGS OR FOR FURTHER INFORMATION

(03) 5852 2845 / Dr Kath McIntosh 0427 497 429

llowalongfarms@nrequine.com.au

THE Faces BEHIND THE FARM

At Llowalong Farms, our team brings together a diverse mix of experience, passion, and dedication. From breeding and stallion handling to administration and foal watch, each member plays a vital role in keeping the farm running smoothly. Whether they come from veterinary backgrounds, equine sport, or hands-on stud work, our team shares a common goal: delivering exceptional care and producing quality Standardbreds. Meet the people behind the paddocks who make it all happen.



KATH MCINTOSH
OWNER
LLOWALONG FARMS
& NORTHERN RIVERS
EQUINE VET CLINIC

Dr. Kath McIntosh first developed Northern Rivers Equine Vet Clinic in 2009. As time has gone by, with her husband Luke, they have developed the farm into 700 acres of stud land to work in synergy with the vet clinic. And from there the stud farm, Llowalong Farms, was born.

Kath has always had a special interest in reproduction and advanced reproductive technologies and takes great pride in the success rates achieved in the 100's of mares bred through the vet clinic and farm each year. There is nothing better than seeing the result of that hard work arrive 11 months later in the form of an adorable foal.

Having an intense sporting interest, Kath takes great delight in growing these little bundles of potential into the athletes we see competing today.

Kath and Luke love farming and spend most of their time on the farm with their two girls – Heidi and Georgia – and chasing the girls around the countryside for their various school and sporting commitments. In her spare time, Kath coaches various netball teams, follows the footy and likes to spend some time in the cooler months at the beach with her family.

Working in a great, progressive team such as this one is so rewarding and the way in which the team all pulls together to achieve such great things through the stud season is to be commended. Goodluck to all for the coming breeding season!



SALLY MCPHERSON
ADMINISTRATION
LLOWALONG FARMS

Sally has worked in the veterinary industry since her 20s, with a strong background in animal care and clinic management. She first met Kath during her time as practice manager at Kyabram Veterinary Clinic, when Kath was completing a student placement. She still remembers the first mare Kath scanned as a new graduate - a moment that marked the start of their ongoing professional connection.

Sally's hands-on involvement with horses began after meeting her partner, whose family has long been involved in harness racing. With his guidance, she learned to train and work Standardbreds, eventually earning her own trainer's license and celebrating her first winner - a horse foaled at Llowalong Farms.

In 2020, Kath asked if she could lend a hand with breeding admin at the farm, which soon sparked Sally's own interest in breeding. She now manages a growing group of young horses, from a 4-year-old through to several foals due this season. Since joining the team, she's become a vital part of Llowalong's operations - coordinating semen orders, bookings, contracts, foal registrations, and client enquiries.

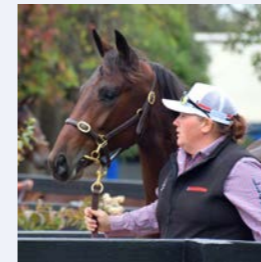
When she's not at the farm, Sally enjoys camping, fishing, and spending time with her children.



CAITLYN JOHANSSON
STUD HAND
& VET NURSE
LLOWALONG FARMS
& NORTHERN RIVERS
EQUINE VET CLINIC

Caitlyn began working at Llowalong Farms in 2022, originally helping out on weekends. Her passion and dedication quickly saw her transition into a full-time stud hand role. This is her first job in the industry, and she's embraced every aspect of it - especially foaling down and working with young foals, which she finds particularly rewarding.

Her farm favourites are Joe and Treaties, two older mares who are now happily enjoying retirement. Outside of work, Caitlyn spends her time with her own horses and enjoys showing her weanling.



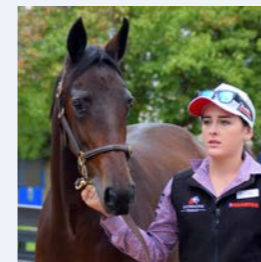
RENEE KEAVENY
ASSISTANT STUD
MANAGER
LLOWALONG FARMS

Renee Keaveny's equine career began at just 15 years old, working in a thoroughbred pre-training stable. Her passion for animals extended beyond racing, and in her 20s she spent two years with Australian Movie Livestock, training and working with a diverse range of animals - including horses, dogs, cats, birds, and even kangaroos - for film and television productions.

After her time in the entertainment industry, Renee returned to her roots in thoroughbred yearling preparation and breeding in the Nagambie region. She joined the team at Llowalong Farms (then known as Northern Rivers Equine Veterinary Clinic) in 2018. Starting out on feed runs and yard cleaning, Renee steadily rose through the ranks to become Assistant Stud Manager and Chief Stallion Handler - a testament to her strong work ethic and hands-on expertise.

In recent years, Renee has also ventured into breeding Standardbreds for the yearling sales, already achieving her first winner from her own program.

Outside of work, Renee enjoys photography and spending time with her pleasure horses.



HOLLI BOND
STUD HAND
& VET NURSE
LLOWALONG FARMS
& NORTHERN RIVERS
EQUINE VET CLINIC

Holli Bond has been involved with horses since the age of three, developing a deep connection to equestrian life from an early age. In recent years, her passion has shifted more towards eventing, where she continues to focus on training and developing her own horses.

Holli joined the team at Llowalong Farms in 2023. Despite a lifelong involvement with horses, it was during her time at the farm that she was properly introduced to the Standardbred breed. Her response was immediate and enthusiastic - she loves working with them. Compared to other breeds, Holli finds Standardbreds to be more level-headed, consistent, and easy to handle.

Among the stallions at the farm, her personal favourite is Yankee Rockstar, describing him as "just so cool and pretty."

Outside of work, Holli dedicates her time to progressing her own horses in eventing. She's currently working with a promising three-year-old filly named Betty, with hopes of developing her into a future champion.

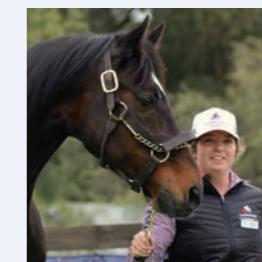


KIMBERLEY WILLIAMS
OFFICE MANAGER
NORTHERN
RIVERS EQUINE

Kimberley Williams has been involved with horses since childhood, starting with Pony Club at age eight and later competing in HRCV events, showing, and dressage - interests she still pursues today. She's also passionate about natural horsemanship, particularly clinics with Allan Collett.

Her professional journey includes time at Seymour Equine Clinic before moving to Koyuga and joining Northern Rivers Equine Veterinary Clinic in 2020. It was here she had her first real experience with Standardbreds, quickly growing to appreciate their calm, consistent nature compared to the Thoroughbreds and Warmbloods she'd previously worked with.

Kimberley values the strong team dynamic at NREVC, especially during the busy breeding season, and finds great satisfaction in supporting clients and learning from international vet students. Outside of work, she enjoys life on her farm with her horses, dogs, pet sheep, and steers. She also works with the CFA, educating the community on bushfire preparedness.



BECKY BRUCE
ASSISTANT OPERATIONS
MANAGER & VET NURSE
NORTHERN RIVERS
EQUINE

Becky Bruce began her career in animal care as a junior veterinary nurse at Corowa Veterinary Clinic, where she spent four and a half years and discovered her passion for working with animals. While studying Agricultural Science at La Trobe University, she also gained experience in the wine industry, working at Cofield Wines for two years. Her varied background even includes a year as a lifeguard. Although she had spent time around horses growing up - thanks to a childhood best friend - she hadn't worked directly with them until joining Llowalong Farms.

Becky started at Llowalong on August 17, 2020, and is now approaching five years with the team. She began on foal watch duties and gradually moved into day work. Today, her role is multifaceted and includes stock ordering, semen processing, and supporting veterinary procedures in a nursing capacity.

She has a few favourites on the farm - weanling Scofflaw, mare Always Be Ally, and stallion Yankee Rockstar top her list.

Outside of work, Becky enjoys an active, outdoors lifestyle. Her spare time is filled with fishing, hunting, clay target shooting, lamb marking, walking her dogs.

THE RICHEST PERFORMER
BY THE SIRING SENSATION

WALNER

KING OF THE NORTH

WALNER | CHECK ME OUT | DONATO HANOVER

1.50.3 \$1,370,242

ROYALTY IN THE BLOODLINES

King Of The North steps into the breeding arena carrying the weight of high expectations - and for good reason. With a blistering race record of 1:50.3 and over \$1.37 million in earnings, he proved himself a force on the track. But it's his pedigree that truly sets him apart. A son of the all conquering Walner and out of the superstar mare Check Me Out, King Of The North represents the very best of modern trotting bloodlines. His legacy is already etched in speed and success - now, he's ready to pass it on.

2021 2YO
TROTTING
COLT OF
THE YEAR

WILLIAM
WELLWOOD
MEMORIAL
WINNER

PETER
HAUGHTON
MEMORIAL
WINNER

NEW JERSEY
SIRE
STAKES
WINNER

BREEDERS
CROWN
WINNER

CARL
ERSKINE
MEMORIAL
WINNER

A NEW ERA OF EXCELLENCE



POWER. PEDIGREE. POTENTIAL.



LLOWALONG
FARMS

SERVICE FEE \$6,600 INCL. GST (FROZEN SEMEN)

FOR BOOKINGS OR FOR FURTHER INFORMATION

(03) 5852 2845 / Dr Kath McIntosh 0427 497 429

llovalongfarms@nrequine.com.au

1.52.8 \$1,048,607

PASTOR STEPHEN

CANTAB HALL | GALA DREAM | ENJOY LAVEC



A MILLIONAIRE IN JUST 22 STARTS AS A 2 AND 3 YEAR OLD



“

He was a really good gaited colt, easy horse to be around and to race. He was top three of his Class as a three year old.

”

JIMMY TAKTER
TRAINER

Pastor Stephen progeny are only just hitting the track with 12 starters for 5 winners.

A PEDIGREE LADEN WITH 2 YEAR OLD SPEED

Pastor Stephen brings together a pedigree rich in trotting excellence. He is a son of **Cantab Hall**, the U.S. 2YO Trotting Colt of the Year, and a dominant force both on the track and at stud. His dam is a half-sister to **Chocolatier**, who also earned the title of 2YO Trotting Colt of the Year, making **Pastor Stephen** a product of two generations of elite juvenile performers. With this powerful genetic foundation. **Pastor Stephen offers breeders a rare opportunity to tap into a lineage defined by early speed, class, and championship success.**



CHAMPION BLOODLINES, ELITE TROTGING HERITAGE



LLOWALONG
FARMS

SERVICE FEE \$3,500 INCL. GST

FOR BOOKINGS OR FOR FURTHER INFORMATION

(03) 5852 2845 / Dr Kath McIntosh 0427 497 429

llovalongfarms@nrequine.com.au

GUIDING EVERY NEW Beginning

Every foal's story starts with care - and for many, that means Pam Jones. Here's what she had to say about her journey.

Q. How long have you been foaling mares down for?

A. I started at Broadmarsh Thoroughbred Stud in Tasmania in 1998.

Q. What are some of the places you have foaled down for?

A. Clairveaux Quarter Horses has always been a foaling station, taking all breeds since 2001.

As well as helping other studs Australia wide. I have now committed (sold my soul) to Llowalong Farms! [The facilities, staff and attention to detail are the best I have worked with.](#)

Q. When did you first become involved in horses and what have you done in your horse career?

A. Horses have been my whole life. From track work, picnic racing, stock droving to breeding and showing Clairveaux Quarterhorses in numerous state and national titles.

Q. What do you enjoy most about foaling down and what keeps you coming back year after year?

A. It is my special place, nothing can replace saving a foal or a mare's life. Watching the foals take their first breath, first steps and latching on for that first suckle. I feel the same deep sense of satisfaction as I did 37 years ago.

Q. Do you have a favourite mare to foal down?

A. Every mare is special and gets 100% from me. I have had and do still have my "Favourites" however that's between me and my 'ladies' (mares).

Q. What do you like about the standardbred compared to other breeds?

A. I like their ability to be the best recipient mares and carry embryo champions of every breed.

Precision IN EVERY COLLECTION

WHAT IS IMPORTANT WITH SEMEN PROCESSING?

Semen is collected from the stallion and analysed in a temperature controlled laboratory. Semen does not like rapid changes in temperature "cold shock" and it does not like water, lubricants that are not semen safe, nor any form of disinfectant. It is firstly measured for the volume received. It is then analysed to see what the concentration (quantity) of sperm is in the collection. The sperm has a certain anatomy that allows it to be able to swim in a straight line and then meet the egg and perform the fertilisation process. Consequently, a sample is assessed under the microscope to look at both the morphology (the anatomy of the sperm) as well as the motility (the movement). This motility or movement is referred to as Progressive motility. Progressively motile sperm are those that have the ability to move forward in a straight line. Not all sperm can do this either because they have an anatomical defect or they have a tendency to swim in circles. "Cold shock" can also cause them to swim in circles. The percentage that are progressively motile sperm is used to calculate the total amount of viable sperm. From there the doses for each mare can be calculated. Typically the semen is extended out to a volume of 25-50ml per dose. Every stallion is different and there can be large variations in volume, concentration and progressively motile sperm between stallions. This can be because of age (old or young), libido, breed, genetic factors and frequency of use. Therefore, there are lots of factors that affect how many mares a stallion can serve with each collection of semen. Usually, the output from a stallion is relatively similar each collection day. Eg Monday, Wednesday and Friday. However sometimes the stallions can have an "off" day and the collection will not be as good as usual. This may be because of environmental factors such as heat, cold or other extremes of weather such as humidity or wind. Sometimes they have an "off" day just because they can! And they are an animal after all!

WHAT IS THE DIFFERENCE BETWEEN CHILLED AND FROZEN SEMEN?

Chilled semen:

Chilled semen is semen that is cooled down very slowly to 4 degrees Celsius. By cooling it down to this temperature it slows the metabolism and activity of the individual sperm right down, therefore prolonging the life of the semen. After analysis of the semen has been performed the semen has extender added to it. This extender is designed to provide nourishment to the individual sperm and protection of the cells of the sperm against the cooling and warming up process. Most extenders have an egg yolk or milk base and usually contain an antibiotic. Chilled semen is what is collected and shipped around Australia and also to New Zealand in the polystyrene boxes. The insulated boxes contain an ice-brick that is separated from the semen by a thin polystyrene layer, gradually cooling the semen and keeping it at that temperature until its ready for use. Usually, this semen is placed in the mare around 24 hours post-collection, but sometimes depending on flight availability and geographical location, this may be more like 48 hours later. Stallions vary in how long they last in extender and there are also several types of extenders that can be used. Some stallions perform better in one extender over another. Chilled semen is inseminated into the mare around 12 hours before she is programmed to ovulate.

Frozen Semen:

This is semen that is cooled slowly to 4 degrees and then frozen in in straws in liquid nitrogen. The same assessment and calculations are performed on the semen as the chilled except the semen is frozen into 0.5ml straws. Typically, 8 straws will constitute

a dose of semen and is the internationally accepted standard. An extender is used for this too. The extender protects the cells in the freezing and thawing process. The semen can be kept for forever in a tank of liquid nitrogen. It is quite incredible that you can thaw these straws in a water bath at 37.5 degrees and the semen goes from being completely immobile to moving around again. Once thawed the semen does not last as long as the chilled semen does in the mare. Therefore, a different program is required for mares being bred to frozen semen. Instead of putting the semen in 12 hours before ovulation, frozen semen is placed into the mare at the time or just after ovulation. Once the mare has been identified by ultrasound as ovulated, the semen is thawed and is placed by deep intrauterine AI technique into the uterus on the side of ovulation. This requires much stricter management of the mare but in the right hands has excellent results.

It is quite incredible really that we can ship, cool, freeze, thaw and warmup semen to suit our needs all around the countryside and indeed the world. There are so many variables involved with the stallion, as well as individual mares. As always, the results vary due to so many variables. These include: the fertility of the mare, management and timing of the ovulation and insemination, post-ovulation checks and treatments, identification of underlying cause of infertility in mares, stallion variations in fertility and technical expertise of the person breeding the mare. It really is incredible that we achieve the results we do in terms of pregnancy rates in horses.



LLOWALONG
— FARM —

www.llowalongfarms.com.au